



# Glenair UniPower<sup>TM</sup> Power Distribution Connectors

*Safe, Rugged, and Reliable Connectors for  
Mobile Generators and Power Distribution Systems*

United States ■ United Kingdom ■ Germany ■ France ■ Nordic ■ Italy ■ Spain ■ Japan



# UniPower™ Power Distribution Connectors

*Safe and Reliable 400-800 Amp Single Contact Connectors for Power Generation and Distribution Systems*



Line Source



Line Drain



Panel Source



Panel Drain

Glenair UniPower™ Connectors provide reliable interconnection between power generation and distribution systems and high-powered equipment such as three-phase motors, concert sound systems, lighting panels, carnival rides and municipal emergency power systems. The color-coded plastic bodies are fire and high impact resistant and are also watertight when mated.

Typical applications include open air concerts, theme parks, sporting events, construction sites, remote television broadcasts, and trade shows.



**GLENAIR, INC.**

1211 AIR WAY • GLENDALE, CA 91201-2497

TEL: 818-247-6000 • FAX: 818-500-9912

EMail: [sales@glenair.com](mailto:sales@glenair.com) • [www.glenair.com](http://www.glenair.com)



# Glenair UniPower™: Safe, Rugged, and Reliable Power Distribution Connectors

## **Power Connectors for Industry, Sound and Show Business**

UniPower™ is a single pole electrical connector used by the entertainment, construction and power utility industries for temporary high current applications. Glenair UniPower™ Power Distribution Connectors provide safe and reliable power distribution connections, typically in three-phase or other polyphase power distribution systems. The connectors are supplied in four formats for standard daisy chain cabling: Panel Drain, Panel Source, Line Drain and Line Source. Supplied in 400A (set-screw) and 800A (Crimp) versions, these shock, moisture and impact resistant connectors are ideally suited for all high current applications including three phase motors, generators, lighting distribution panels, and temporary municipal power supplies.

**Reliable connections for field installable power distribution systems such as mobile generators.**



**Industrial power distribution boxes are often equipped with Glenair UniPower™ connectors.**

## **Color Coded for Three Phase Applications**

UniPower™ power connectors are designed for single phase and much more commonly three phase applications. Each connector format is available in color-coded versions corresponding to industry standards for three phase systems: L1, L2, L3, Ground (G), and Neutral (N). Conductors

of a three phase system are usually identified by a color code, to allow for balanced loading and to assure the correct phase rotation for induction motors. Colors used vary from country to country, and may vary even within a single installation. Glenair UniPower™

Power Connectors are color coded according to industry standards and common practice in the U.S., UK and Europe. New "harmonized" color coding, per IEEE BS7671:2001 Amendment No. 2, is also available for pan-European applications.



## **Easy Termination and Assembly**

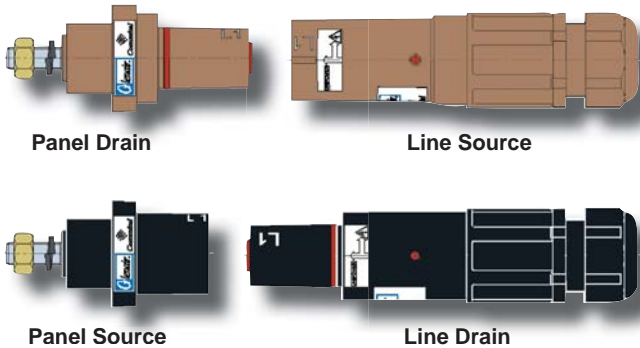
UniPower™ power connectors utilize industry standard crimp tools, dies and other assembly aids for proper termination and assembly of cables and connectors. Depending on application requirements, additional tools such as cable strippers, cotter presses, strap wrenches or other tools may be needed. One specialized tool is required for all applications: A lock pin release key which is used to disengage the spring loaded pin which prevents accidental unmating during use.

Glenair is able to supply the complete range of tooling as well as termination instructions for most standard installations.

## **Available Now**

Glenair is well known throughout the connector industry for fast turnaround and delivery on high-performance interconnect components. Our UniPower™ power connectors are no exception. We are able to offer extraordinarily fast service on orders throughout Europe, the UK and in North America. Please visit us at [www.glenair.com](http://www.glenair.com) for complete order information.

# Glenair UniPower™ Product Specifications



## Color Coding

Area	Earth	Neutral	L1	L2	L3
USA	Green	White	Black	Red	Blue
Europe	Green	Blue	Brown	Black	Grey
UK	Green	Black	Red	Yellow	Blue
IEEE BS7671:2001 Amd. No.2	Green	Blue	Brown	Black	Grey

## Glenair UniPower™ Product Specifications

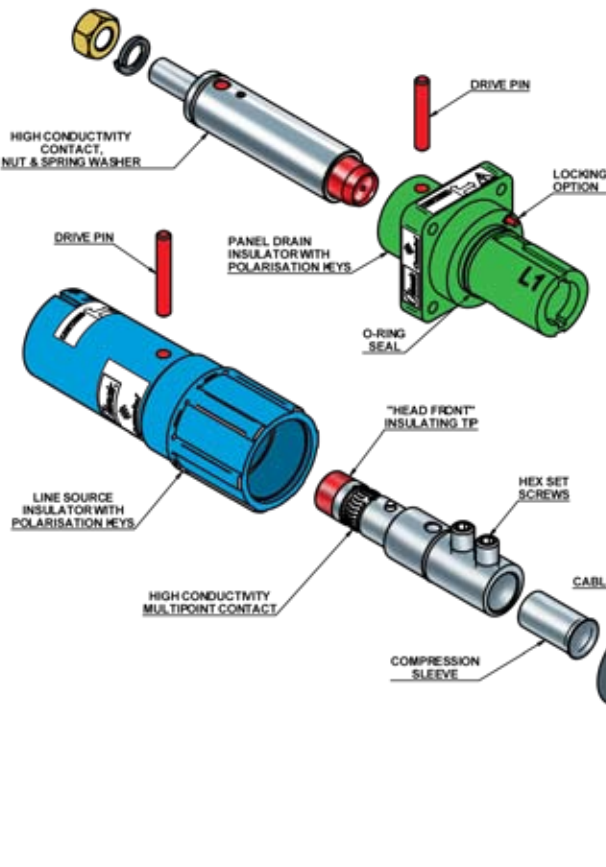
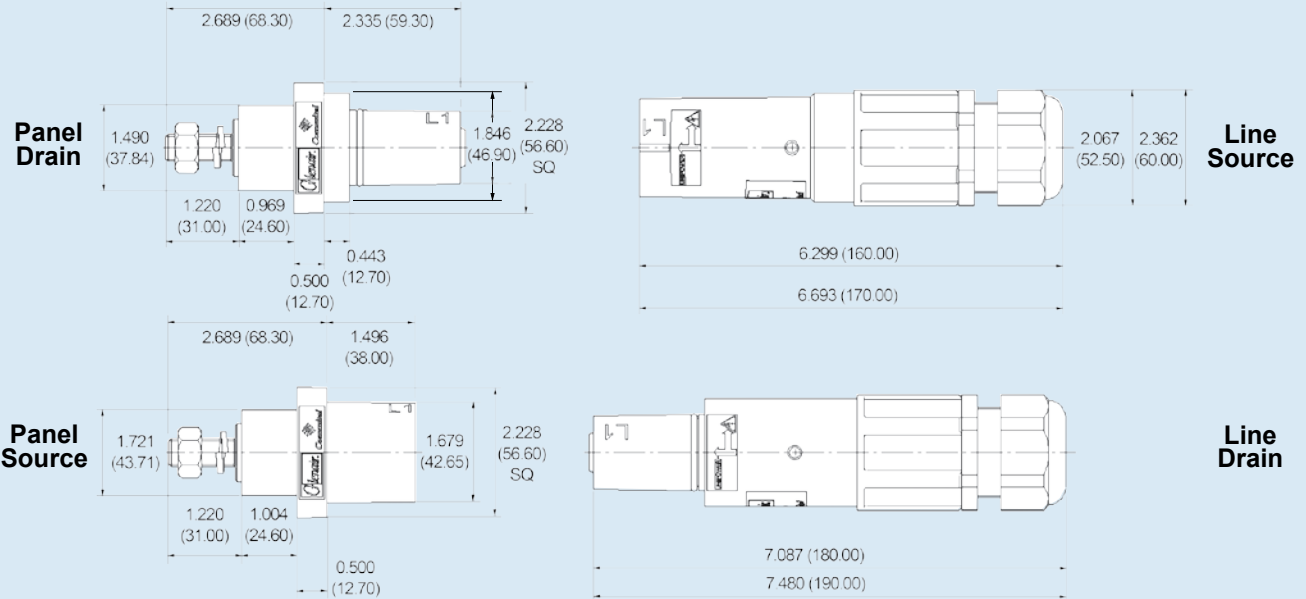
*Glenair UniPower™ single contact connectors are qualified in both the EU and U.S. for use in portable power generation and distribution systems. This table summarizes the baseline product specifications for connectors equipped with crimp, set screw and threaded post contacts.*

Formats	Panel Drain, Panel Source, Line Drain, and Line Source
Cable Section	Crimp Contact Version: 300 mm <sup>2</sup> max ; Set Screw Version: 120 mm <sup>2</sup> max
Contact Types	Crimp, Set Screw or Threaded Post (Panel Versions Only)
Contact Retention/Extraction System	Drive Pin with Secondary Lock
Mating Method	Polarization Keyways with Lock Pins
Mating Cycles	500
Layout	Single Contact with Finger Touch Insulating Tip
Maximum Current Rating	400A (120 mm <sup>2</sup> Set Screw), or 800A (300 mm <sup>2</sup> Crimp)
Maximum Rated Voltage to Ground	2KVAC; 3KVDC
Test Voltage	8.000 Vac
Minimum Insulating Resistance	>5x10 <sup>3</sup> MΩ at 500 Vac
Operating Temperature Range	-30°C to +125°C
Flammability	UL 94 VO
Shell Material	Thermoplastic Resin
Environmental Resistance	Watertight in Mated Condition to IP67
Safety Features	Mechanical and Color-Coded Mis-Mate Protection; Finger-Proof Contact Nose
Shell Colors	Green, Black, Red, Yellow, Blue, Brown, White, and Grey
Accessories	Compression Sleeves, Lock Pin Release Key, and Protective Covers
Assembly Tools	Industry Standard Crimp Tools and Dies Available for All Crimp, Set Screw and Panel Mount Terminations. Consult Factory for More Information.



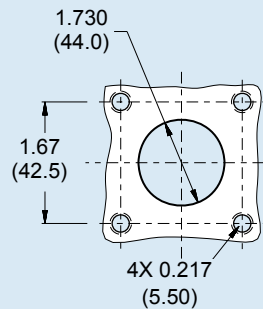
# Glenair UniPower™ Product Specifications

## Connector Dimensions

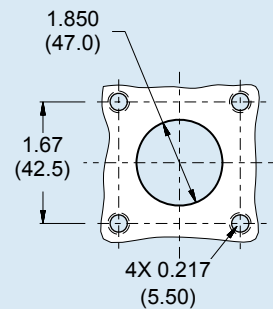


## Panel Cut-Out Dimensions

### Panel Source Cut-Out



### Panel Drain Cut-Out



Metric Dimensions (mm) are in parentheses

# Connector Formats and Contacts

## Line Source

**Line Source  
400A, Black**

Glenair UniPower™ line source connectors are available in 400A and 800A ratings, and feature rigid male contacts with a dielectric cover to prevent accidental shock. A secondary locking pin slot ensures connector pairs will stay mated—free from accidental decoupling. Cable sealing glands protect against environmental damage to contact terminations. Finally, a rugged nylon cotter pin secures everything in place, for long-term, reliable power connectivity for even the most challenging of applications.

**Line Source  
800A, Brown**

The 400A version allows users to terminate a wide range of cables, from 25mm<sup>2</sup> to 120mm<sup>2</sup>, by means of a reduction sleeve. Simply tightening the two set screws atop the contact fastens the reducer onto the wire—providing complete versatility in the selection of cable and wire for power system applications.

## Line Drain

**Line Drain  
400A, Black**

Glenair UniPower™ line drain connectors are available in 400A and 800A max current ratings, and feature rigid IP2X spring loaded contacts secured firmly in place with rugged nylon cotter pins. Like their source counterparts, shock-resistant insulating tips safeguard users from accidental electrocution.

Standard O-ring and cable sealing glands ensure IP67 environmental rating when connectors are mated for long-term durability and reliability.

Tugged cables or curious hands can't accidentally decouple UniPower™ connector pairs, thanks to a secondary locking pin that securely joins the connectors in the mated position. A secondary remote locking key disengages the mated connectors safely and quickly. Color coded connectors prevent mis-mating and comply with EU, UK and US standards.

**Line Drain  
800A, Blue**

# Connector Formats and Contacts

## Panel Source and Drain

Glenair UniPower™ panel source and drain connectors offer complete flexibility in power system device configuration. Choose between source and drain formats, in either 400A or 800A ratings. All panel connectors feature a rigid IP2X 'finger proof' dielectric insulating tip to protect users from accidental electrocution.

The panel source connector features a male contact and secondary locking pin slot to prevent accidental cable de-mating due to cable torsion. Panel drain connectors are supplied standard with female contacts that feature an IP2X spring loaded nose and IP67 rated O-ring environmental seal. The connectors are ideally suited for industrial power distribution systems, three-phase motors, concert sound systems and other outdoor, environmental applications.

All panel receptacles are shipped fully assembled. Color coding prevents mis-mating and ensures compliance with EU, UK and US standards.



## Contacts and Accessories

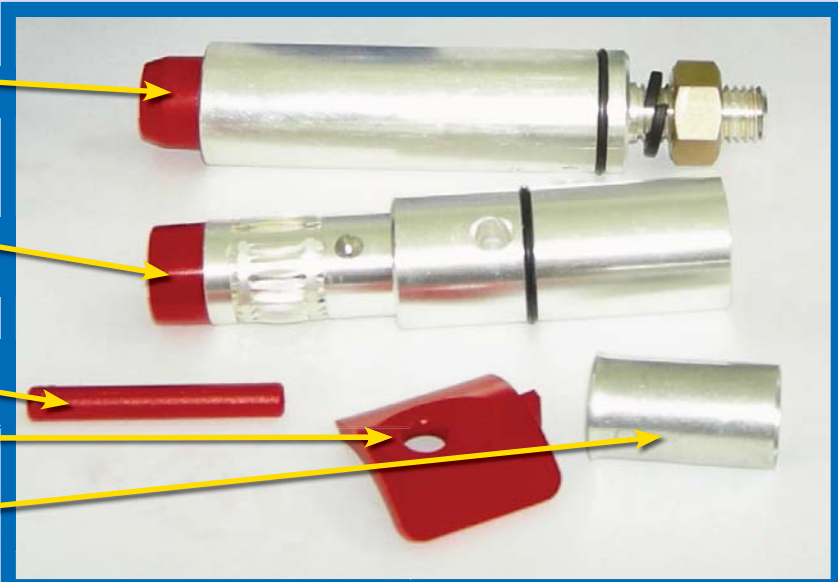
**800A Version High Conductivity Contact, Nut, Spring and Washer**

**400A Version High Conductivity Multipoint Contact with Set Screws**

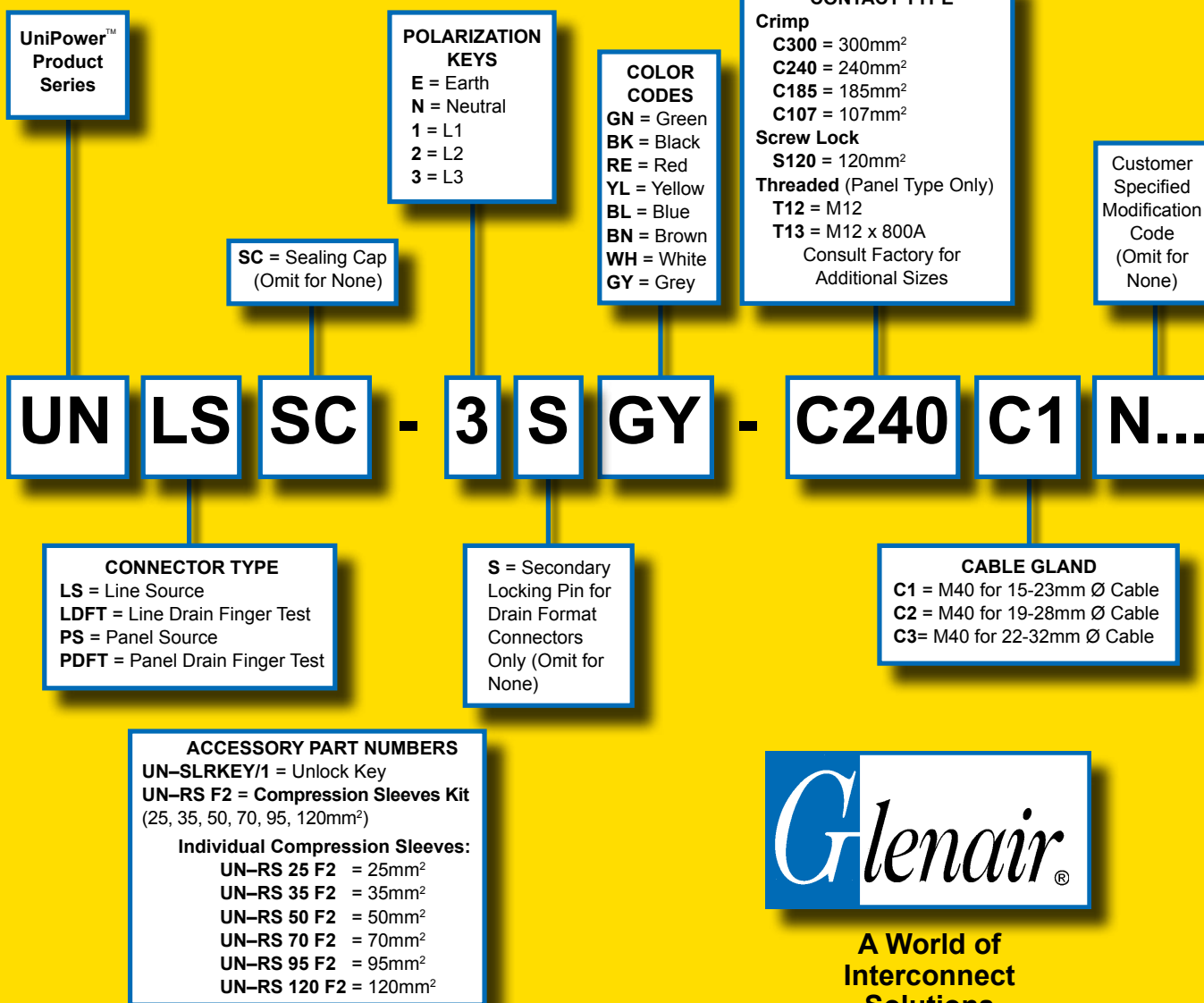
**Locking Pin**

**Lock Pin Release Key**

**Reduction Sleeve**



# Glenair UniPower™ Connectors



**Glenair, Inc.**  
**Commital Product Management Team**  
 25 Village Lane  
 Wallingford, CT 06492  
 Telephone: 203-741-1115  
 Facsimile: 203-741-0053  
 sales@glenair.com

**Glenair Commital**  
 Via Cà dell'Orbo, 49  
 40050 Villanova di Castenaso  
 Italy  
 Telephone: 0039-051-782811  
 Facsimile: 0039-051-782259  
 commital@commital.com

**Glenair Connectors Italia S.R.L.**  
 Via Santi, 1-20037  
 Paderno Dugnano  
 Milano  
 Italy  
 Telephone: +39-02-91082121  
 Facsimile: +39-02-99043565  
 E-mail: sales-italia@glenair.com

**Glenair, Inc.**  
**Worldwide Headquarters**  
 1211 Air Way  
 Glendale, California  
 United States of America  
 91201-2497  
 Telephone: 818-247-6000  
 Facsimile: 818-500-9912  
 E-mail: sales@glenair.com